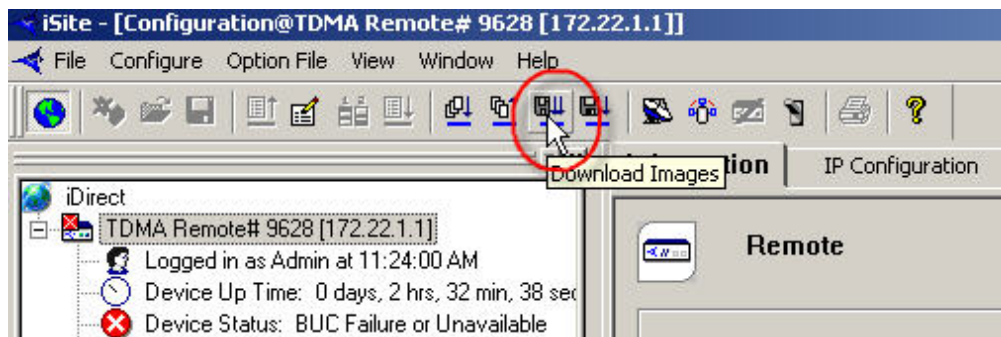




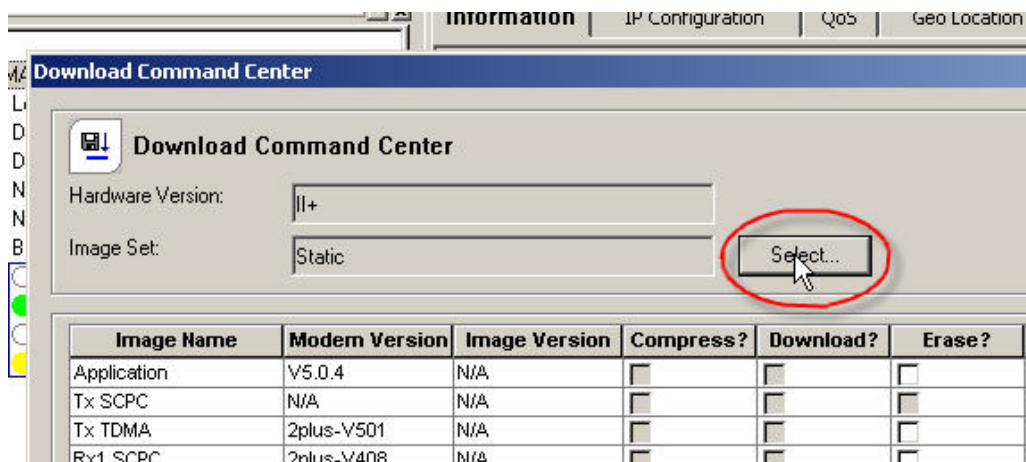
NETMODEM UPGRADE PROCEDURE: Firmware upgrade v5.0.x to 6.0.x

This document assumes there is IP connectivity between the netmodem and the computer using iSite, the firmware images are available on the computer, the netmodem is model II+.

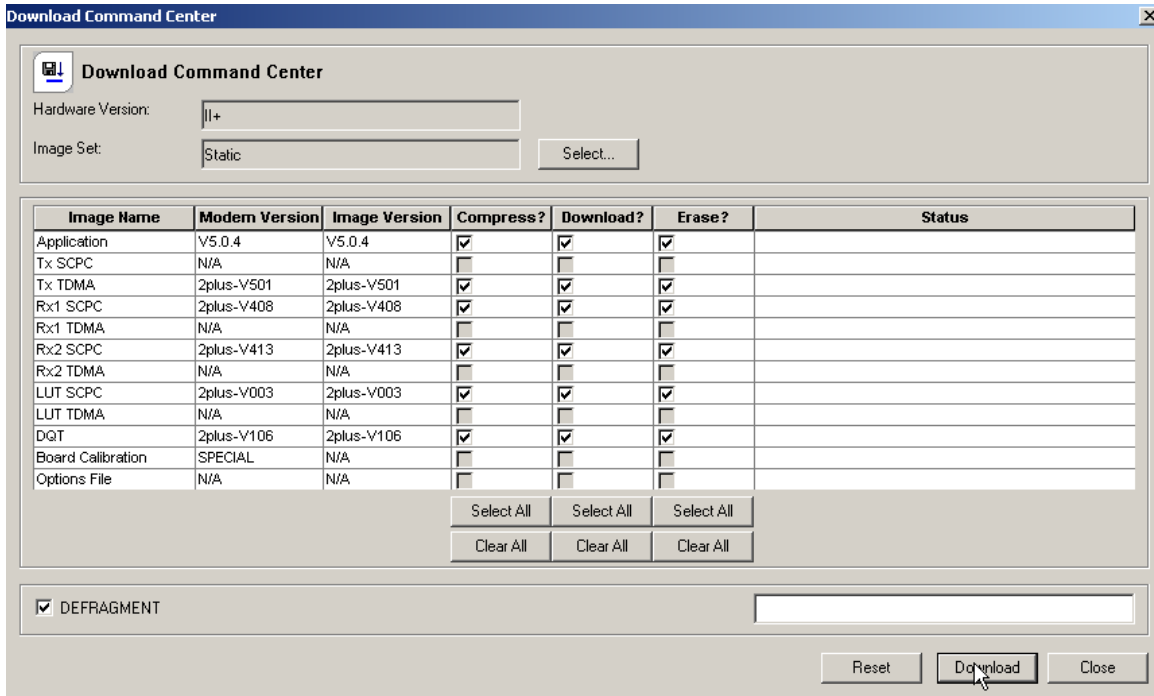
1. Open iSite and login as Admin. Once the main window is open click on the 'Download Images' icon from the toolbar or from the 'Configure' Menu.



2. Click the select button and browse to the firmware to be loaded on the netmodem.



3. Make sure the Application line shows the correct version (V6.0.7) under 'Image Verison' column. Check all available boxes under the Compress, Download and Erase columns. Also check the defragment box in the lower left corner of the Download Command Center, then click download.



4. The netmodem now has the new images loaded and will operate with them after resetting. When the corresponding version option file is loaded, reset the netmodem. If the corresponding version 6.0.7 option file is not already loaded in the netmodem DO NOT reset the modem. First load the correct version of option file and then reset the modem.

If there are any questions at any point of the upgrade process, do not hesitate to contact LBiSat network operations at 801-501-9990.